





We specialize in bringing the indoors out, changing the way people live through design and innovation every day.

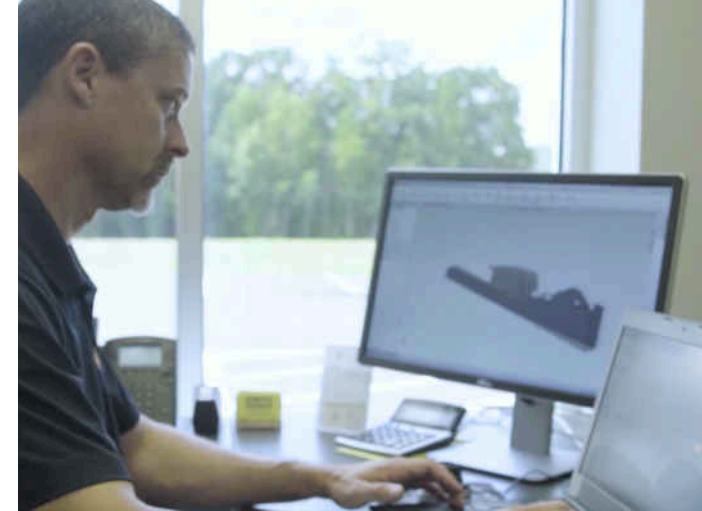
HISTORY	02
AMERICAN CRAFTSMANSHIP	04
PIVOT SYSTEM	06
SLIDE SYSTEM	08
QUALITY MATERIALS	10
ALUMINUM CONSTRUCTION	12
SOLUTIONS FOR YOUR SPACE	14
RANGE OF MOTION	16
COMMERCIAL & RESIDENTIAL SPACES	18
TECHNOLOGY & OPERATIONS	20
iLOUVER™ APP	22
ENVIRONMENTAL INNOVATION	24
LIFETIME WARRANTY	26
ARCADIA CARE	28
SPECS & OPTIONS	29



The Outdoor Living industry has been one of the fastest growing industries over the past decade. Popular programming on networks like HGTV and DIY, dedicated to decorating and home improvement, now educates and inspires homeowners about all the possibilities for transforming their homes. As the trend of moving indoor rooms outdoors grew, creating unique ways to manage the elements like sun and rain became key to making these spaces more useable. Traditional architecture provided some fixes, but came with limitations and drawbacks. The industry was hungry for a better answer.

That's why Arcadia created the perfect solution to controlling the effects of weather. We designed, engineered and patented the highest quality resolution for improving outdoor living. Today, as the leading innovators in shade and shelter products, we continue to push the envelope, incorporating advanced technology and building materials into our latest designs. No other system offers this level of quality and technology.

Now let's talk about your space. We want to help you create an outdoor living area that you'll enjoy for years. A space to enjoy good times with friends and family. A space that reflects your personality and sense of style. A space that's protected from the elements so it's comfortable year round. A space that's as functional as it is beautiful. Are you ready to create the space that's as unique as you?



Arcadia Building Products, Inc. was founded in 2011 by CEO and Chief Product Architect, Scott Selzer. As a school teacher with a part-time remodeling company, Scott specialized in building decks and pergolas, refinishing basements and tackling other home improvement projects for his clients. When his students encouraged him to follow his dream to become a full-time entrepreneur, Scott started Adjustable Patio Covers, a company focused on improving outdoor spaces.

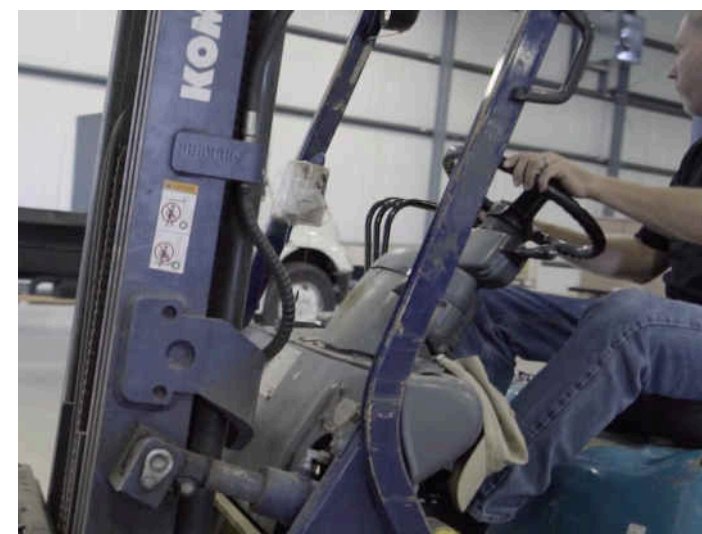
Scott's company was one of the first to bring an adjustable louvered system to the East Coast. As its popularity grew, Scott quickly found ways to re-design, innovate and patent a higher quality version that he sold to his local customers. And that was just the beginning.

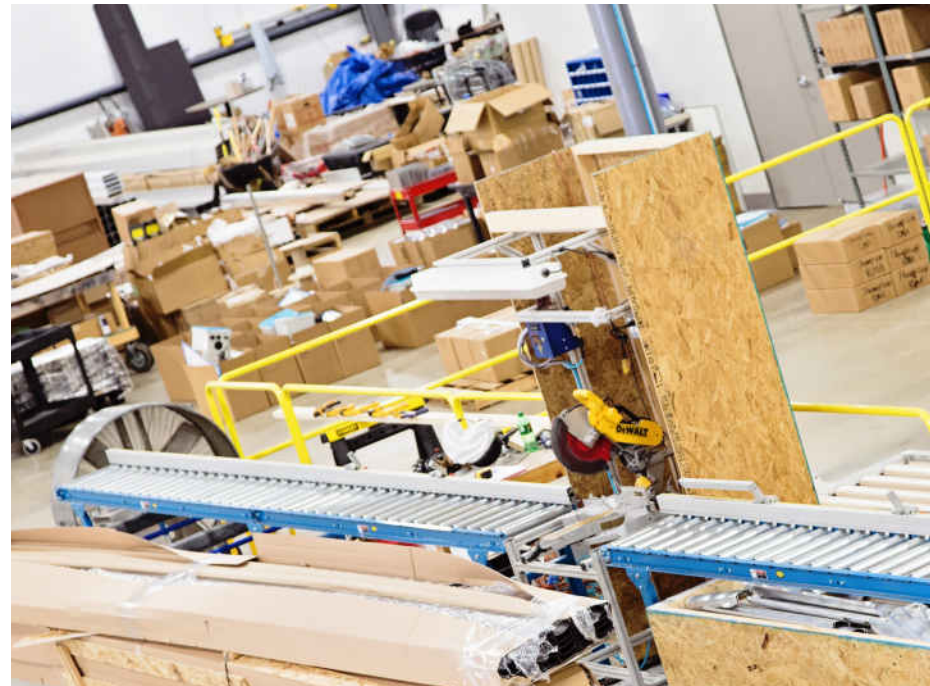
Engineered and designed to withstand all types of weather conditions, the Arcadia Pivot was the new company's first offering in 2011. Since then, Arcadia has become one of the fastest growing* privately held companies in the United States. This growth led us to move into a new state-of-the-art manufacturing facility and corporate headquarters in North Georgia. We opened our Southern California office and manufacturing facility this past year. Our expansion plans include moving into a larger West Coast manufacturing facility in Nevada, as well as opening additional distribution facilities to keep up with our growing national dealer network. With Arcadia dealers from Canada to the Caribbean, we are poised and ready to lead the way to more innovative outdoor living across North America.

Yet even with all this explosive growth, Arcadia still holds true to its core values: quality, customer service and innovation. In pursuit of building a great company we recognize that good isn't good enough. That's why we will never compromise the quality of our products. And to be great, we know we must offer impeccable customer service to our dealers and their customers. Arcadia is continually expanding our technology and design, with a focus on architectural innovation and leading-edge building materials. Our next generation of products will continue to evolve and break new ground. As the leader in automated shade and shelter, our mission is to enhance outdoor living and exceed people's expectations for what outdoor lifestyle really means.

*Inc 5000 Fastest Growing Private Companies list 2016, 2015 & 2014

*Entrepreneur 360 list 2016





Designed, Fabricated & Assembled by American Craftsmen

TO YOUR EXACT SPECIFICATIONS

Arcadia luxury systems are manufactured entirely in the U.S. by American workers who take great pride in what they do. Our team of people really cares and is passionate about building the best system made — and that dedication shows in the beauty and quality of all our products.

Each Arcadia system is engineered to exceed all standards and expectations. They're designed to meet Florida's stringent hurricane codes, as well as withstand heavy snow loads in the cold of winter. Plus, each Arcadia system is fabricated and powder coated to order, made to exact specifications, which makes for a better fit and finish and a cleaner looking system.

Ideal for any outdoor living areas, such as patios, decks, lanais, verandas, entryways, courtyards, outdoor kitchens, swimming pools and spas. It's a perfect enhancement for patron comfort at Country clubs, restaurants, hotels, resorts, theme parks and sports venues. Select from a variety of available colors, materials and finishes to complement any architectural style and conform to your aesthetics.



Learn more about our craftsmanship at [ArcadiaBP.com](https://www.ArcadiaBP.com)



Pivot to create shade or shelter from the elements.

Pivot

The original Arcadia system has been improved and perfected since its inception in 2011. Its award-winning pivot design gives a full 170° range of motion to provide a cool oasis, regardless of the sun's position. Now available with Arcadia's iLouver™ technology, the Pivot can intuitively control the effects of the weather to enhance your outdoor lifestyle.



CLOSED

When closed, the patented louver design interlocks, providing a solid shelter from rain. Water is pitched into the system's 360° integrated gutter.



ANGLED IN

Shaded space provides protection from the harmful effects of the sun. The Pivot provides SPF protection and allows you to spend more time outdoors without added sun exposure.



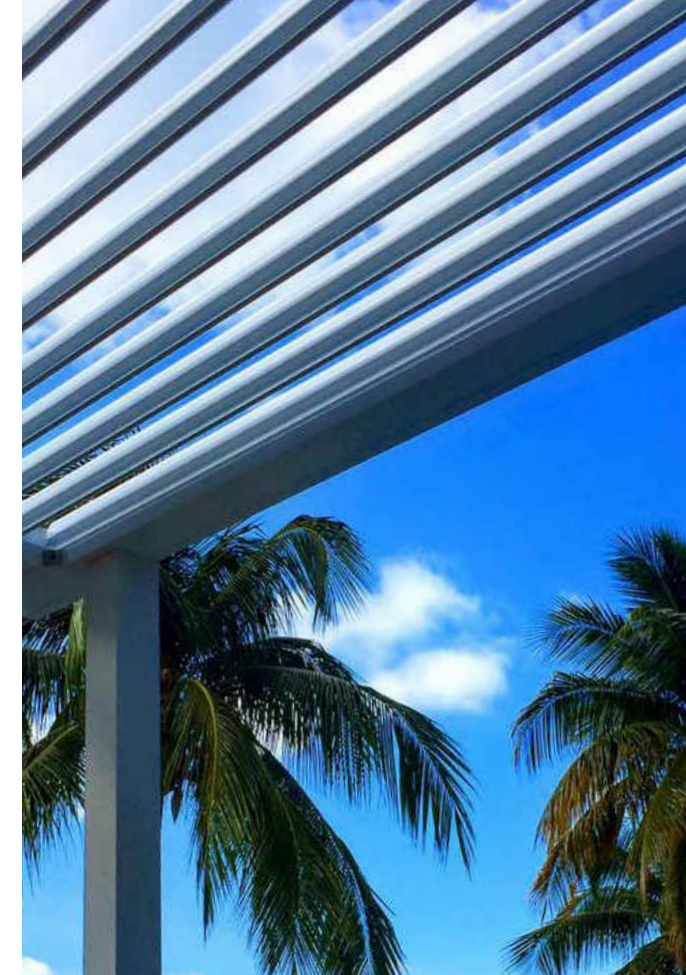
OPENED

Allow maximum light into your space with the louvers fully opened. Minimizes resistance and uplift in high winds.



ANGLED OUT

Angled louvers provide cool shade and air flow without blocking your blue sky view.

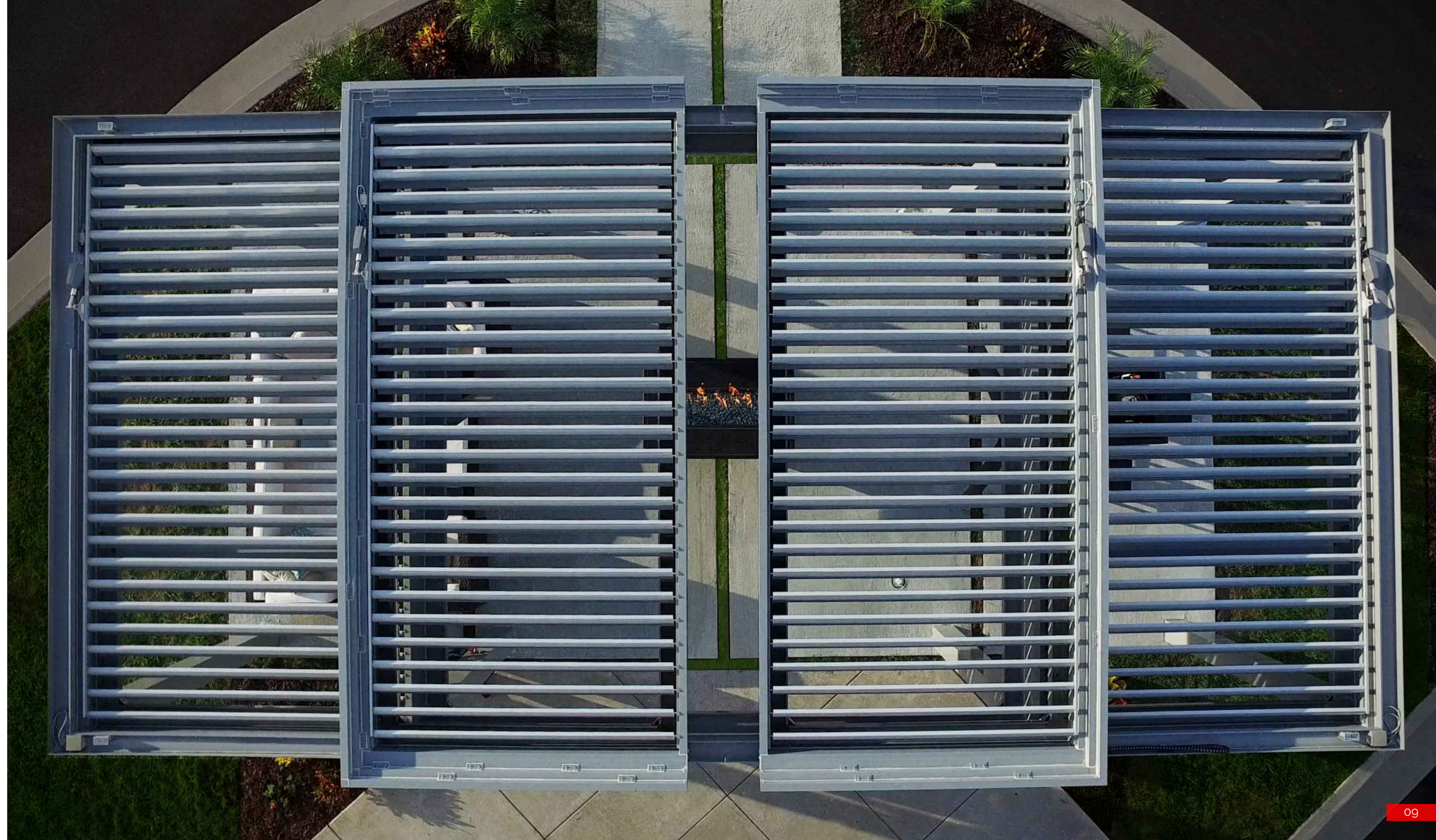
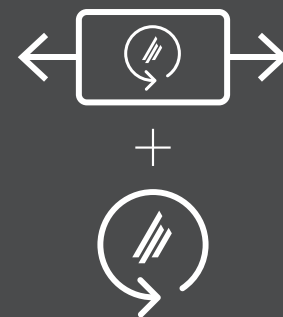




Slide

We listened to our customers' feedback and challenged our design team to do what no other louvered roof can do: give you full sky. The Arcadia Slide gives you the ability to open the space above you while maintaining the versatility of the Pivot. By combining these two features, the Slide has totally revolutionized the way we view outdoor living. Now, the sky's the limit.

We can design an Arcadia Slide in larger spaces, where a full sky view can provide an impressive visual and eliminate the barrier between you and a beautiful day. With the push of a button, simply slide one pivot zone above another to open up your space. Then, when you're ready, close the Slide and return it to the full functionality of an Arcadia Pivot.



High-Quality Building Materials

EACH ARCADIA SYSTEM IS A WORK OF ART, CONSTRUCTED WITH CARE AND ATTENTION TO EVERY LITTLE DETAIL.

Our goal is to give you the strongest, most durable system on the market today. That's why every Arcadia system is constructed from fully-extruded aluminum and stainless steel components. The Smart Motor drive system that powers our designs is American made and UL and CE certified.

When it comes to finish, we believe a premium product deserves a premium powder coat. We use a premium architectural grade powder coat on all our standard components. Our process demands a more thorough pre-treat process to prep for better adhesion. This is critical when combating the effects of salt water, chlorine and other environmental conditions. Arcadia delivers a higher quality standard finish because our customers demand — and deserve — the best.



COLORS TO

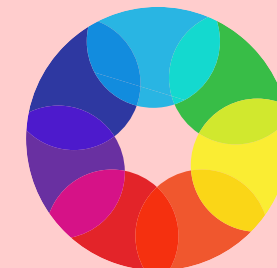
The Arcadia system features four standard color options that can enhance almost any architecture. For unique instances where standard won't do, we are able to provide thousands of custom colors for the perfect match. A chemical textured powder coat makes a more scratch-resistant surface, while giving it a matte finish that is extremely on-trend for outdoor design today.

WHITE

BEIGE

ADOBE

BRONZE



4 Standard Colors Available
or Choose A Custom Color.
Now Offering Woodgrain Options.



EXTRUDED ALUMINUM

Withstands the Elements

/ LIGHTWEIGHT

Aluminum weighs less by volume than most other metals and materials.

/ STRONG

Aluminum profiles can be made as strong as needed for most applications.

/ NON-CORROSIVE

Aluminum does not rust.

/ RESILIENT

Aluminum combines strength with flexibility and can flex under loads or spring back from the shock of impact.

/ REFLECTIVE

Highly reflective aluminum can be used to shield products or areas from light, radio waves or infrared radiation.

/ NON-COMBUSTIBLE

Aluminum does not burn and, even at extremely high temperatures, does not produce toxic fumes.

/ RECYCLABLE

Aluminum retains a high scrap value. It can be recycled indefinitely without losing any of its superior characteristics.

/ ACCEPTS FINISHES

Aluminum can be finished with a variety of common techniques, including liquid paint, powder coatings, anodizing or electroplating.



The only fully extruded aluminum
louvered roof system on
the market today.



Solutions for Your Space

Arcadia's philosophy is "if it can be designed and engineered, we will build it." Truly amazing designs can be created to meet your exact requirements — however demanding, unusual or eccentric. We take pride in making your Arcadia system one of a kind. With so many options and limitless possibilities, how do you know where to begin? Our product specialists can help you design an Arcadia for your outdoor space that is uniquely yours.

CUSTOMIZABLE

Each Arcadia can be customized to meet virtually any existing architectural elements.

- / CEILING FANS
- / ACCENT LIGHTING
- / CUSTOM COLORS
- / WOOD / FAUX CLADDING
- / CUSTOM COLUMNS
- / CORNICE STYLE FACADE
- / PERGOLA CUTS / CORBEL ENDS
- / MOTORIZED SOLAR SCREENS
- / OUTDOOR CURTAINS
- / OUTDOOR HEATING & COOLING



Range of Motion

THE ARCADIA PIVOT AND SLIDE GIVE YOU THE POWER TO CONTROL THE WAY SUN AND RAIN AFFECT YOUR OUTDOOR LIVING SPACE.

We designed our Arcadia Pivot to create shade in any space, regardless of position of the sun. Our quiet linear drive system is smooth and efficient in moving the louvers from zero to 170°. This range of motion provides complete control over both light and weather in your outdoor environment, so your plans can stay as flexible as our systems.

Your perfectly-angled louvers allow for excellent air flow, creating a cool, comfortable outdoor space, where it's possible to enjoy both the feel of the shade and the beauty of a clear blue sky. We like to think of it as the best of both worlds.

170
DEGREE / RANGE OF MOTION

When the system is closed, our interlocking louvers channel water into a fully extruded aluminum gutter system. Our 360° gutter design provides a more efficient water management when the louvers are closed.

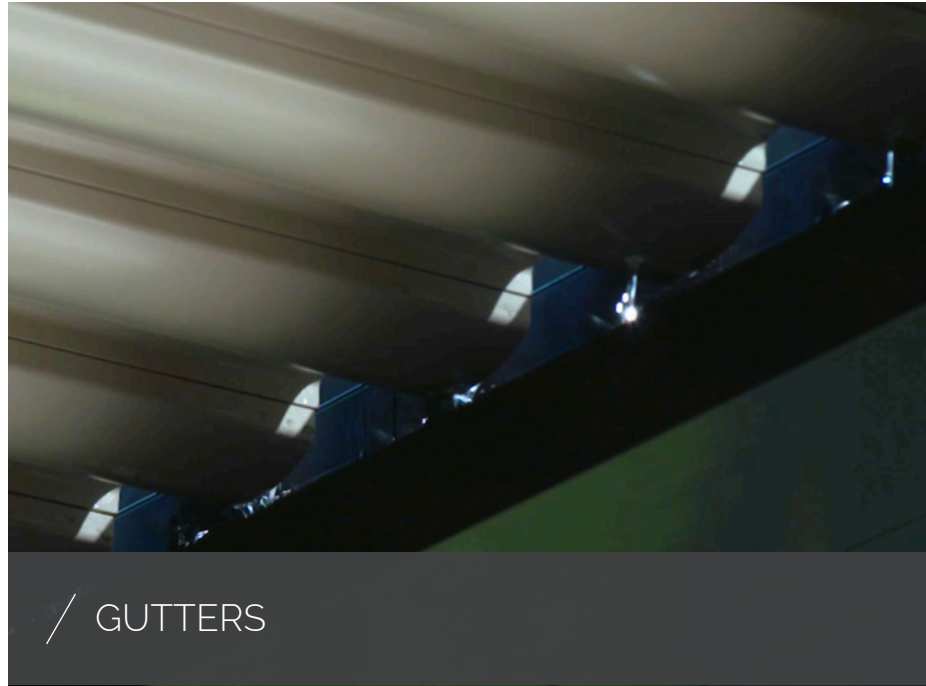




COMMERCIAL

RESIDENTIAL

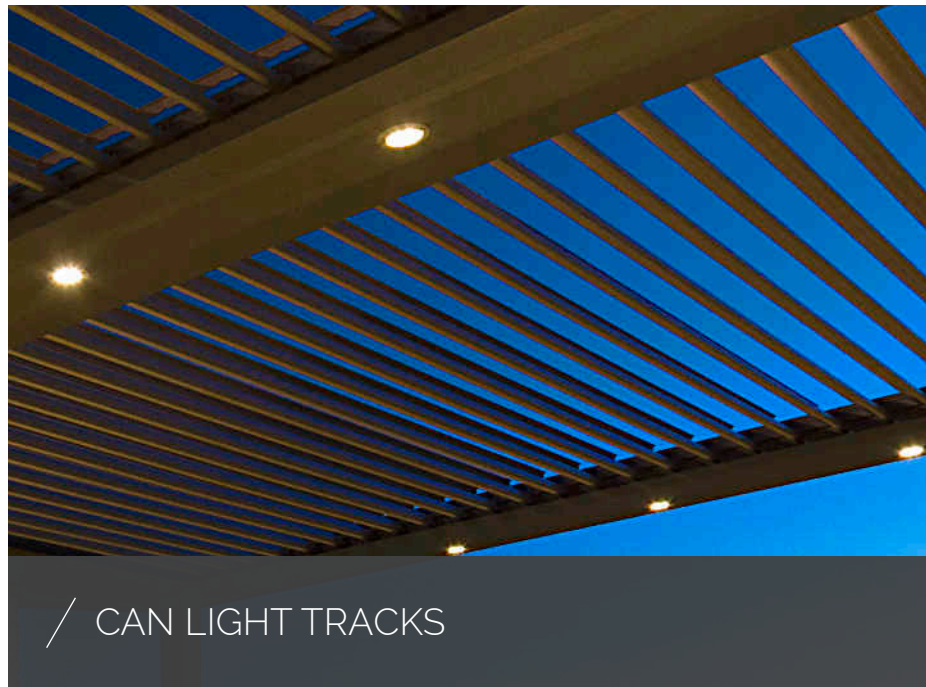




/ GUTTERS



/ LOUVERS



/ CAN LIGHT TRACKS



/ POSTS & BEAMS

Advanced Technology & Operations

/ iLOUVER™ TECHNOLOGY
Smartphone App

/ SENSORS
Rain/Wind/Programmability

/ MANUAL OPERATION
Optional

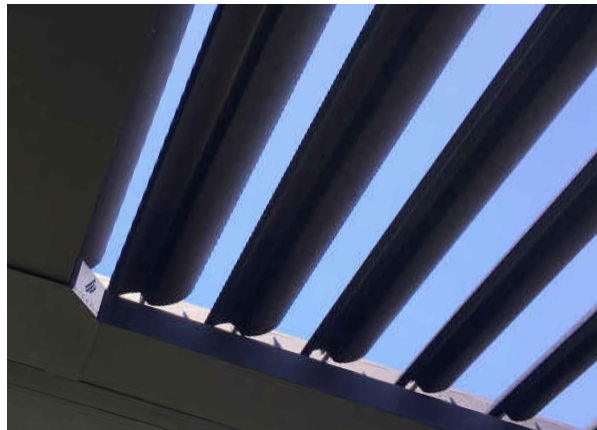
/ ELECTRIC OR SOLAR POWERED
Select Your Options

/ MOTORIZED DRIVE SYSTEM
UL & CE Certified

/ ARCADIA CARE
Preventative Maintenance & Cleaning



Everything is designed to work in unison. The result is fingertip control and a dynamic connection with your outdoor space.



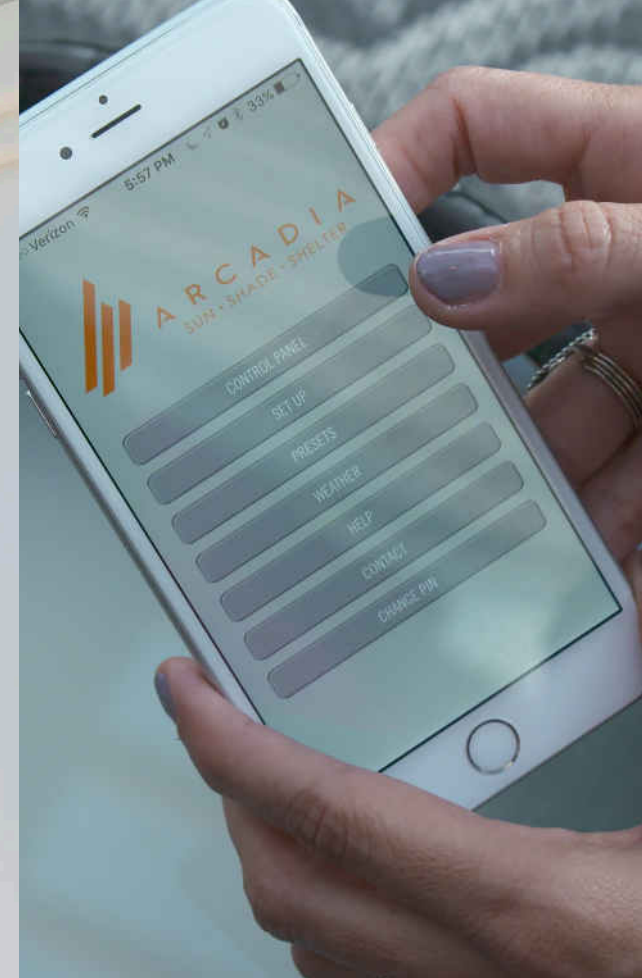
Control your system and set all your programming on your smart device through our integrated app and Bluetooth-synced operation.



Our sensors can be set to automatically open and close the roof depending on the weather conditions. Re-opens to the last known position or any pre-set position programmed.



This setting can sense excessive wind speeds and fully open the louvers to minimize uplift, allowing the air to flow through the system freely. Hurricane mode overrides all other functions so the louvers stay open until the storm passes.



Thinks On Its Own

WITH ARTIFICIAL INTELLIGENCE

Welcome to the smarter side of outdoor living. The iLouver™ app by Arcadia provides the ultimate control of your outdoor living environment from the palm of your hand. It's just one of the ways Arcadia continues to innovate, continually perfecting our products through applied design and advanced technology to provide the best customer experience.

iLouver™ Technology provides users with a variety of programming options including:

- / Set open and close times for each day.
- / Choose four preset positions for the perfect position at the right time of day.
- / Choose how your system performs in rain (optional rain sensor).
- / Choose how your system performs in high winds (optional wind sensor).



Environmental Innovation

Arcadia is proud to continue its tradition of environmental innovation. Using sustainable building materials, we've created the strongest, lightweight Arcadia that is virtually maintenance free. From the selection of our building materials to our innovative designs and lean production methods, Arcadia is committed to operating as a sustainable business and reducing its overall environmental impact.

ECO-FRIENDLY DESIGN

Each Arcadia system is manufactured in the U.S. and fabricated with recycled aluminum, making it an extremely green product. The louvers can be oriented in any direction desired for maximum control over sunlight. That means in the winter, you can let sun through to provide warmth and light to adjacent rooms. In the summer, you can angle your louvers to provide energy-saving shade. At any time of year, rain water can be reclaimed from closed louvers and used to water plants. In every season, there's a reason to love Arcadia's eco-friendly design.





Limited Lifetime Warranty

Arcadia Building Products, Inc. extends a transferable limited warranty to the structural components and moveable accessories of our products.

Arcadia warrants our products for the lifetime of each product against manufacturer's defects in materials.

15
YEARS / STRUCTURAL COMPONENTS

10
YEARS / MANUAL OPERATOR

5
YEARS / ELECTRICAL COMPONENTS & DRIVE MOTOR

Arcadia Care

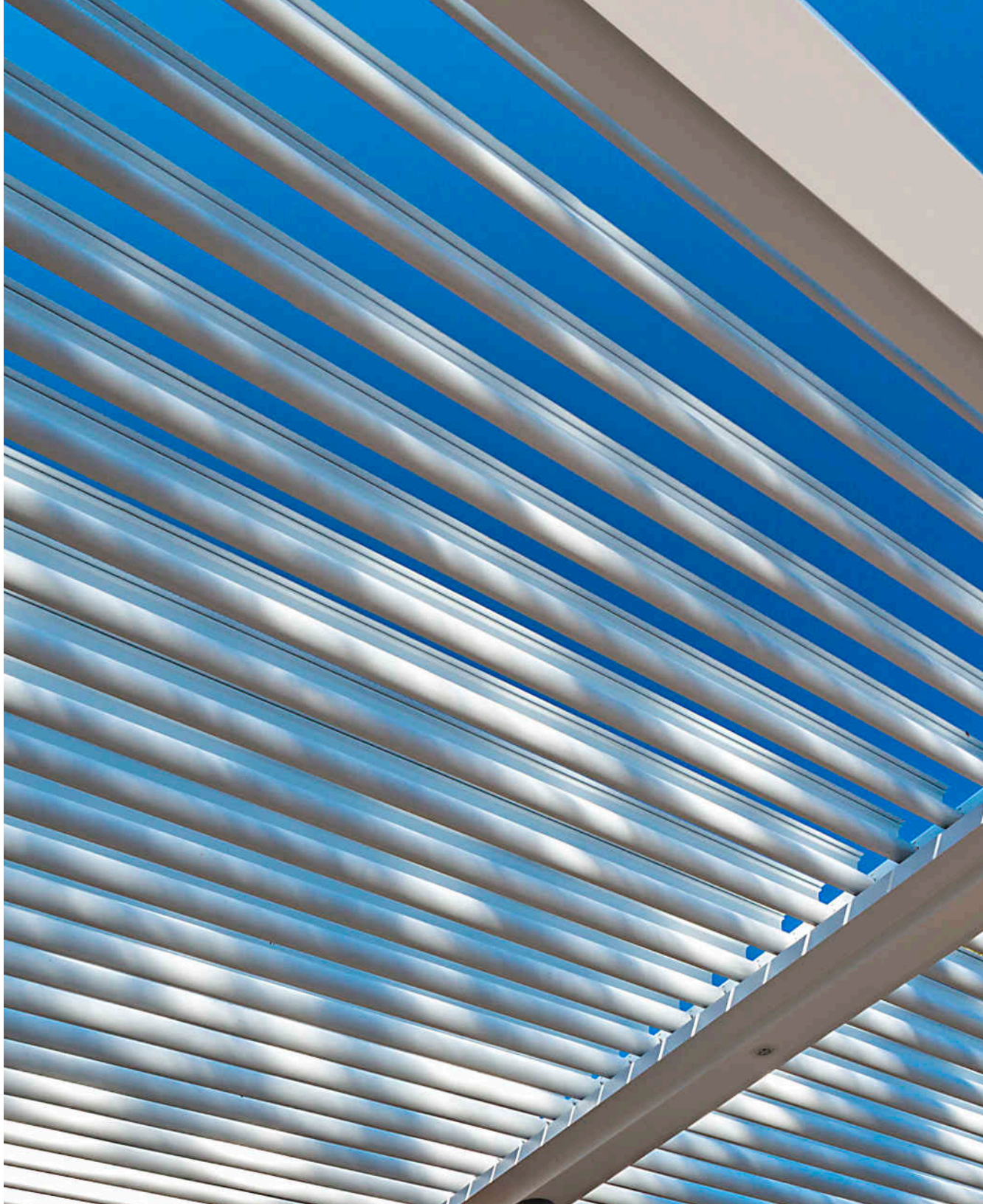
Think of it like changing the oil in your car or taking it to a carwash for a detail. You want to take care of your investment. Arcadia Care is a planned preventative maintenance and cleaning program generally performed once or twice a year, that's designed especially for your Arcadia system. This program will allow you to keep your Arcadia operating at peak performance, so you may enjoy it for many years to come.

Members of the Arcadia Care Preventative Maintenance Program, enjoy the standard coverage offered by the general Arcadia Product Warranty, plus the following add-ons.

- / TESTING OF MOVING PARTS
- / GENERAL WEAR AND TEAR CHECKED
- / COMPREHENSIVE CLEANING OF LOUVERED ROOF
- / SYSTEM GUTTER CLEANING

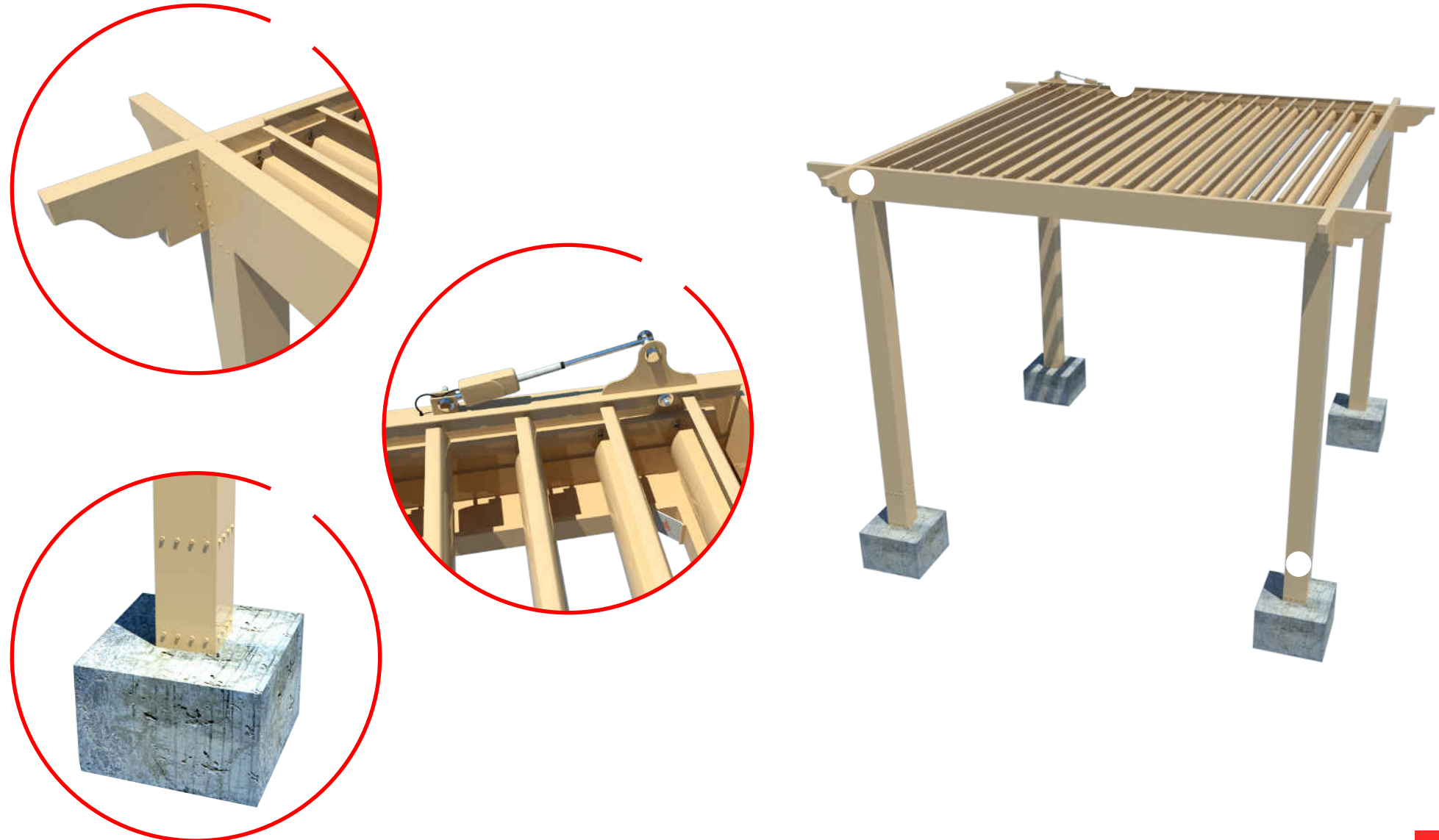
Please contact the dealer that installed your system for more details and pricing. Joining is optional.

(Not all Authorized Arcadia Dealers participate in Arcadia Care, please check with your local dealer.)



Arcadia Pivot in its Simplest Form

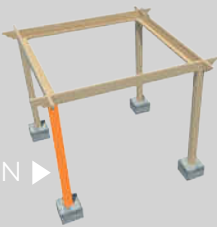
/ ARCHITECTURAL OVERVIEW



Basic Components:

/ POST / POST BASES & BRACKET

NAVIGATION ▶



Basic Components:

/ BEAMS / CONNECTORS

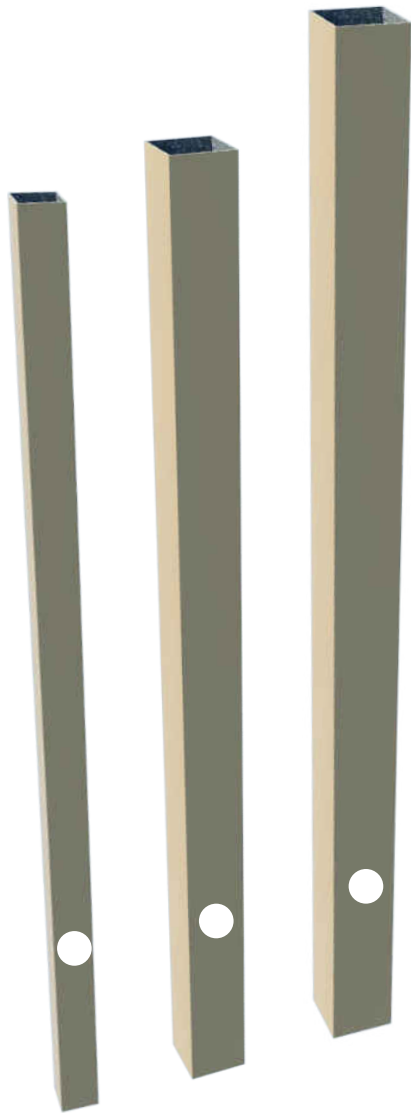
◀ NAVIGATION



Column 4" x 4" x .125"
Column 4" x 4" x .250"

Column 6" x 6" x .125"
Column 6" x 6" x .250"

Column 8" x 8" x .250"

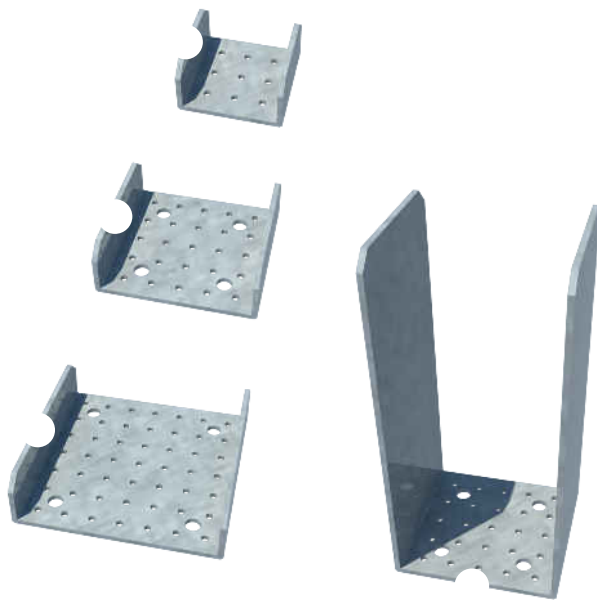


Post Bracket 4" x 4"

Post Bracket 6" x 6"

Post Bracket 8" x 8"

Post Base Bracket 6" x 6"



STANDARD SIZE

2" x 10" x .125"

2" x 8" x .125"

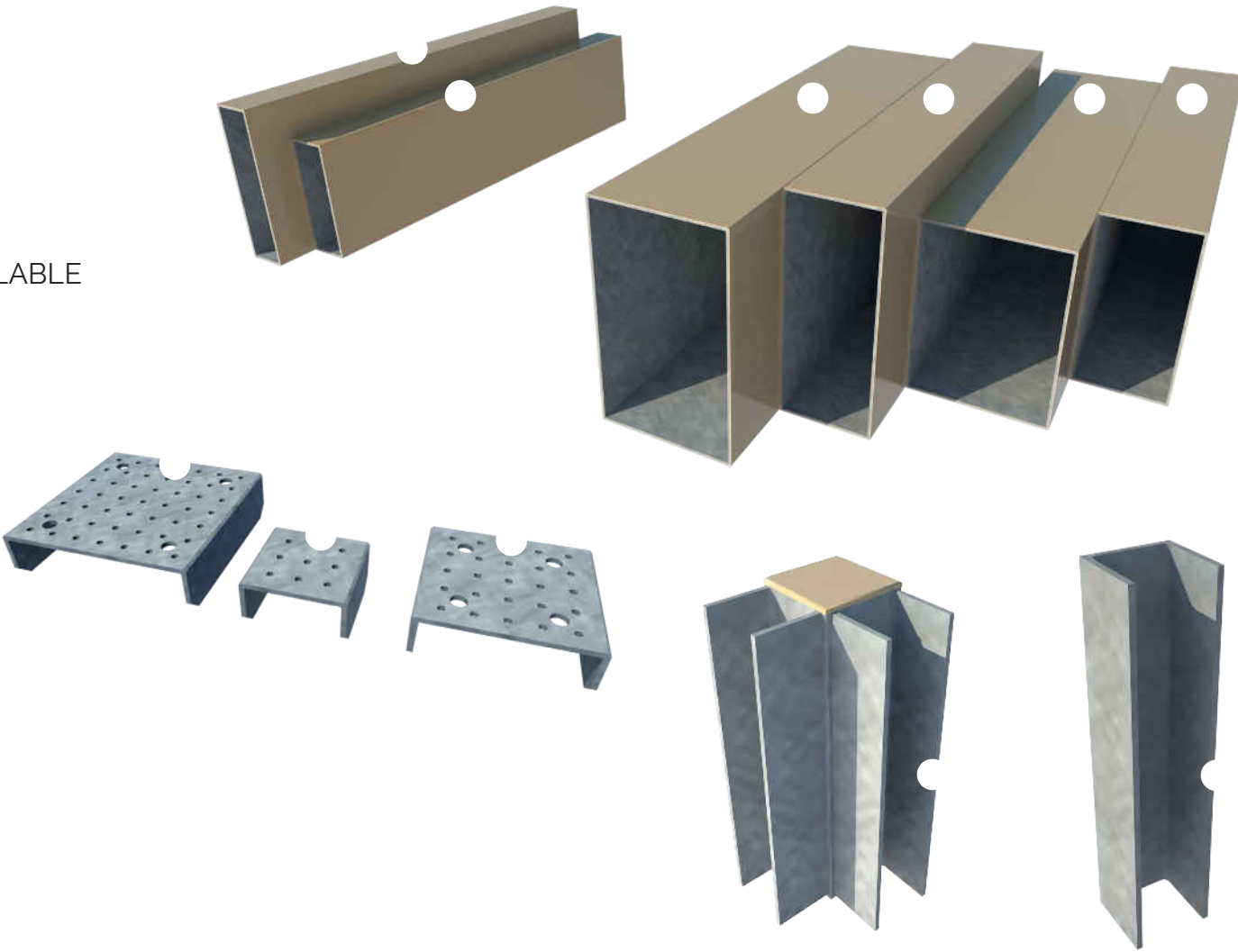
ADDITIONAL BEAM SIZES AVAILABLE

6" x 10"

4" x 10"

6" x 8"

4" x 8"



BEAM TO POST CONNECTOR

Post Bracket 8" x 8"

Post Bracket 4" x 4"

Post Bracket 6" x 6"

Beam Corner Connector

U-Channel Connector

Basic Components:

/ GUTTERS

NAVIGATION



Basic Components:

/ LOUVER / PIVOT & TRACK BAR / MOTOR

NAVIGATION



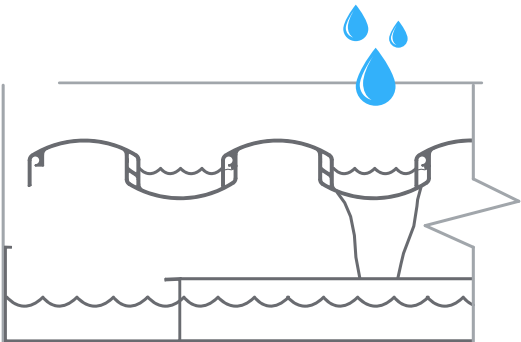
Corner Gutter
Pass Through Gutter
Gutter



Louver
Pivot Pin
Track Pin
Track Bar
Cap Bar
Pivot Bar
Motor



The unique louver profile allows the louvers to interlock, creating the largest rain channels in the industry. Thus, allowing for more water to flow freely into our 360 degree integrated gutter system. Arcadia's patented Pass Through Gutter technology allows for rain water to pass from one independent zone to the next allowing for superior drainage performance.



TECHNICAL SPECIFICATIONS		2000N
VOLTAGE		
Input voltage	[VDC]	12
LOAD		
Static load (Fx), maximum	[N]	2000 (450 lbs)
Dynamic load (Fx), maximum	[N]	2000 (450 lbs)
STROKE		
Stroke lengths, standard	[cm]	custom
CURRENT		
Current consumption, rated load	[A]	4.5 / 2.2
Current consumption, stall/in-rush	[A]	14 / 8.0
GENERAL DATA		
Speed, no load	[mm/s]	5.8 (.23"/s)
Speed, rated load	[mm/s]	4.0 (.16"/s)
Operating temperature limits	[°C]	-25 to 75 (-13F to 167F)
Duty cycle, maximum	[%]	10
Life, average	[cycles]	10000
Sound level	[dBa]	< 45
Lead screw type		acme
Protection class		IP67
Certificates		CE (EN60601-1) UL (UL60601-1)



800.303.5248 / INFO@ARCADIABP.COM / ARCADIABP.COM